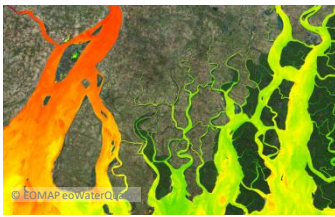


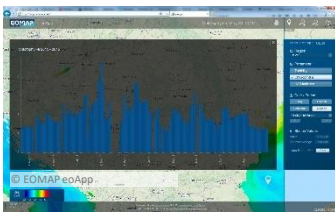
# EOMAP GmbH & Co. KG

The industry leader in aquatic earth observation  
地球水质观察领域的巨擘



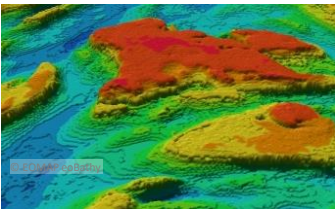
Water quality and sediment load monitoring  
水质与河流泥沙监测

Processing software & GeoIT solutions  
处理软件 & GeoIT 解决方案



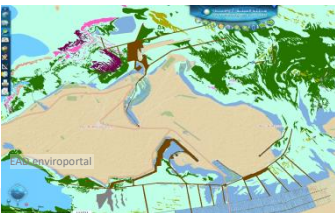
Seafloor habitat mapping  
海底栖息地测绘

Satellite-derived bathymetry (SDB)  
卫星测高水深数据 (SDB)



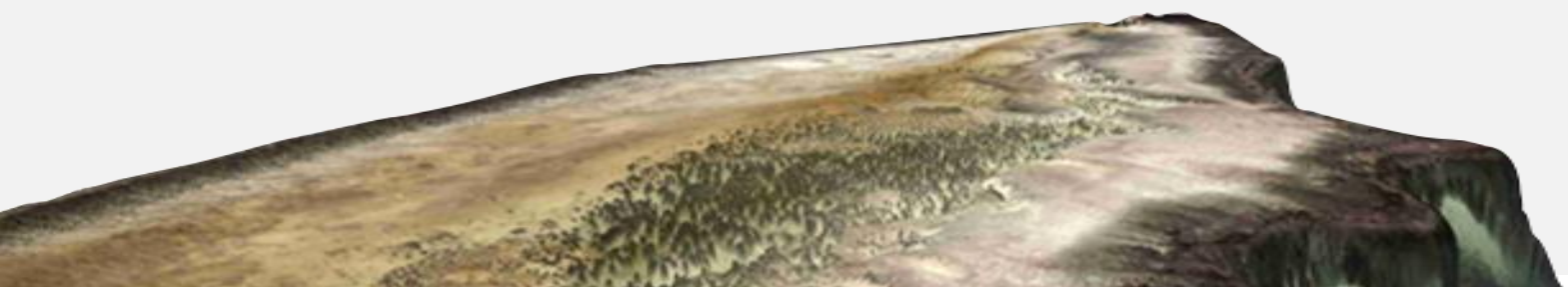
Environmental mapping  
环境测绘

Obstruction identification  
障碍识别



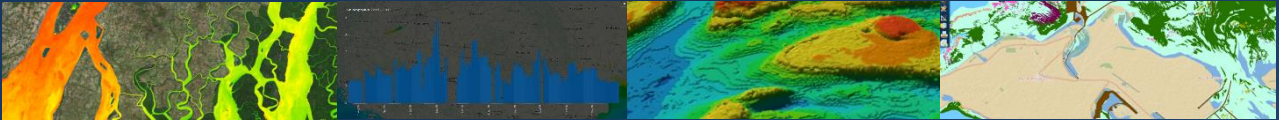
Satellite imagery provision  
提供卫星影像

Capacity building and consulting  
能力建设与咨询



# EOMAP GmbH & Co. KG

## The industry leader in aquatic earth observation 地球水质观察领域的巨擘



### Leading the market

#### 市场领导者

Government, Defense, O&G, and Environmental Agencies. Examples include UNESCO worldwide inland water quality monitoring contract, State Agency BW-Germany

客户多为政府、国防、O&G 及各环境机构。成功案例包括与联合国教科文组织 (UNESCO) 签署了全球内陆水质监测合同、与德国巴登-符腾堡州政府机关有合作项目。

Largest high-resolution water quality monitoring operations

规模最大的高分辨率水质监测机构

Partnered with the global leaders in their field: FUGRO, 7C's, DigitalGlobe, ESA, DLR

业内合作伙伴：荷兰辉固国际集团 (FUGRO)、7C's、数字地球公司 (DigitalGlobe)、欧洲航天局 (ESA)、德国宇航中心 (DLR)

10+ yrs of proven market leading services

10年以上久经市场考验的领先服务

### Leading the technology

#### 技术的先驱

20+ years of proven technology development and service integration

20年以上久经考验的技术开发与服务整合技术

Internationally awarded, patented and validated processes, setting the standards

作业流程经过专利认证并在国际上屡获殊荣，进而成为业内标准

Introducing state of the art physics based algorithms to the industry since 2006

自 2006 年起，陆续向业内推出最先进的基于物理学的算法

Multi-platform and multi-sensor technology offering global, fit-for-purpose solutions

以多平台及多传感器技术为全球客户提供量身定做的方案

*"For this location and coverage, we estimated to have made a **cost saving of approximately one million dollar** compared to a traditional executed bathymetry and/or topographic LiDAR survey."* J. Siermann (SHELL) et al.

*"The services and **products delivered** for the Mexican Maya coast **are exceptional** and will be fundamental in developing our seafloor habitat baseline, [...]"* Dr. Rainer Ressler, Director Geomatics Department of CONABIO

*"The **speed** in which the final products were delivered **greatly added to the usefulness and importance of the data** in the tendering and planning phase of the seismic campaigns."* J. Siermann (SHELL) et al.

*"This information **is regarded as essential** for any government or company involved with managing the [Great Barrier] reef environment."* Professor Stuart Phinn, University of Queensland

*"Well done to the EOMAP team and you set a **very high bench-mark** for others to follow using these SBD [Satellite Derived Bathymetry] methods."* Dr Robin Beaman, School of Earth and Environmental Sciences, James Cook University